



## **Introduction to WCHSA**

**For Wisconsin Human Services Financial Managers Assn.**

**May 23, 2023**

# TOPICS FOR WCHSA PRESENTATION

Overview of WCHSA

Collaboration with WHSFMA on financial issues

WCHSA priorities for state biennial budget

# WCHSA MEMBERSHIP

All 72 Wisconsin counties are WCHSA members

Who's involved?

- Directors
- Deputy Directors
- Senior Managers such as program division managers
- Line supervisors and staff for subject matter expertise

# WCHSA LEADERSHIP

Bill Topel, President (Winnebago County)

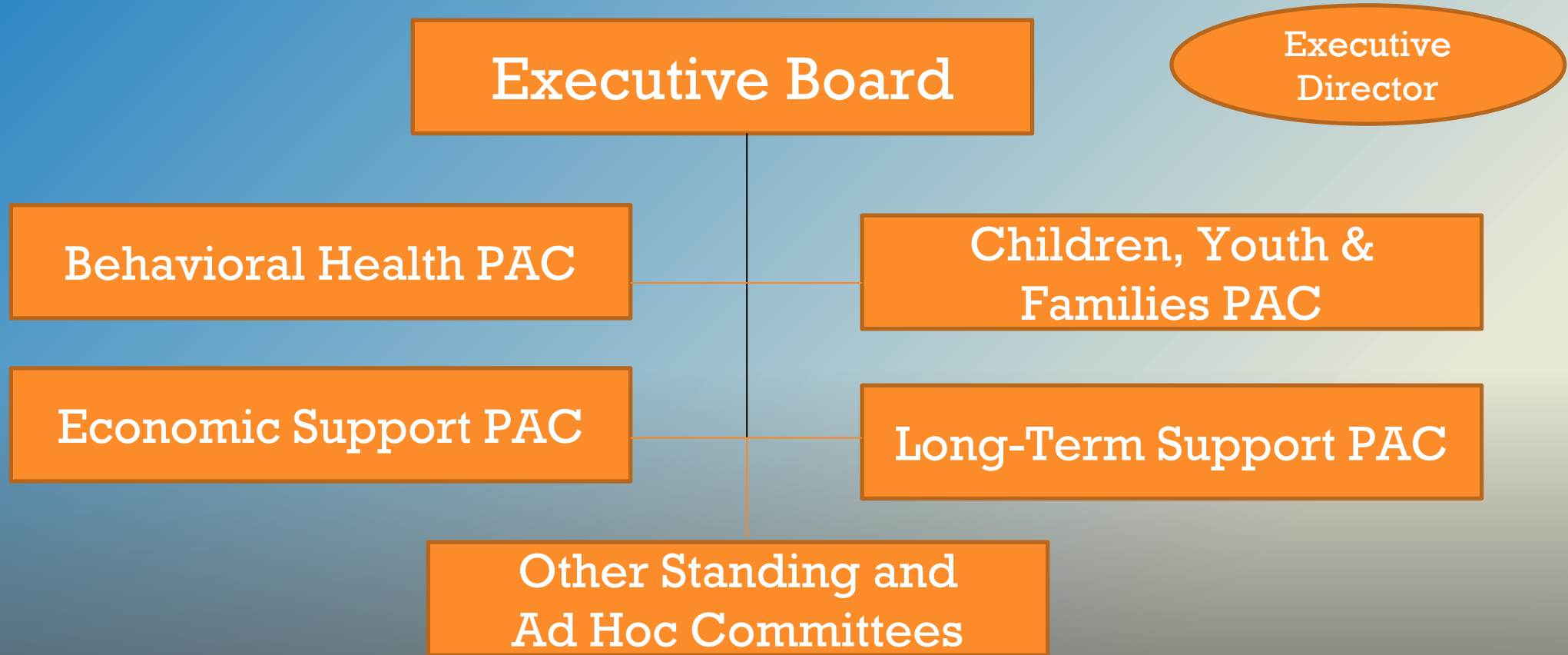
Matt Strittmater, Vice President (Sheboygan County)

Kelly Oleson, Treasurer (Adams County)

John Tuohy, Executive Director

Executive Board – 15 members, 3 from each region

# WCHSA ORGANIZATIONAL STRUCTURE



# POLICY ADVISORY COMMITTEES

WCHSA has four Policy Advisory Committees (PACs) representing the programs and services of the County Human Services system:

- Behavioral Health
- Children, Youth and Families
- Economic Support
- Long-Term Support

PACs have 20 members comprised of directors, managers, supervisors, and staff from member counties who are knowledgeable about the programs or services.

PACs have significant impacts on statewide policymaking, advising the WCHSA Executive Board and working with state agencies on policy issues.

# FINANCIAL ISSUES

When the WCHSA Board considers financial issues, the human service director board members typically consult with their financial managers.

Examples of financial issues:

- State legislation affecting funding to counties
- State agency policies affecting how counties are reimbursed
- State/county contract requirements

WCHSA does not have a Financial PAC or a standing relationship with WHSFMA for the WHSFMA leadership to advise the WCHSA Board on financial issues.

# OPPORTUNITIES TO WORK TOGETHER

What options are available for WHSFMA to work together with WCHSA on human service financial issues?

Form a financial advisory committee

Participate in state/county contract discussions

Make recommendations to the WCHSA Board



# WCHSA PRIORITIES FOR 2023-25 STATE BUDGET

**Crisis - Full state funding for Medicaid Crisis reimbursement and elimination of current MOE requirement**

**CSP – Full state funding for Medicaid CSP reimbursement**

**APS – Increased funding for adult protective services**

**Other Items – increased funding for Birth to 3, IM administration, ADRCs, in-home prevention services, kinship care expansion, child care counts grants, and elimination of CLTS MOE**

# QUESTIONS?

John Tuohy, Executive Director

[johnt@badgerbay.co](mailto:johnt@badgerbay.co)

608-852-9069

[www.wchsa.org](http://www.wchsa.org)